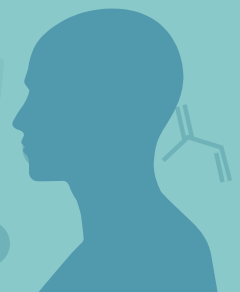


# Performance and Interpretation of Hydrogen and Methane Breath Testing - Impact of North American Consensus Guidelines

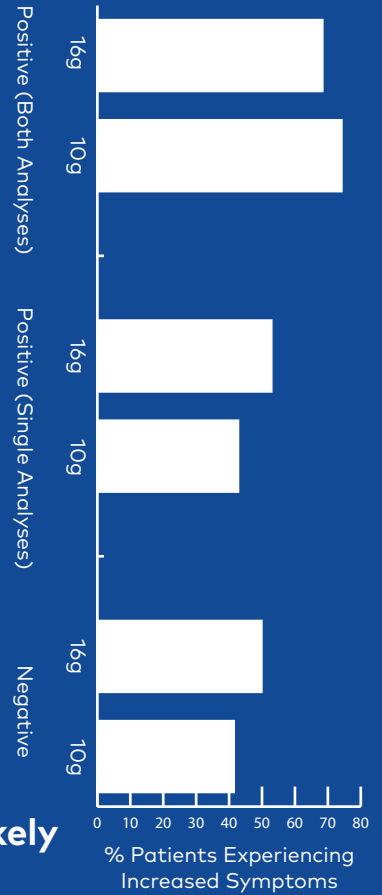
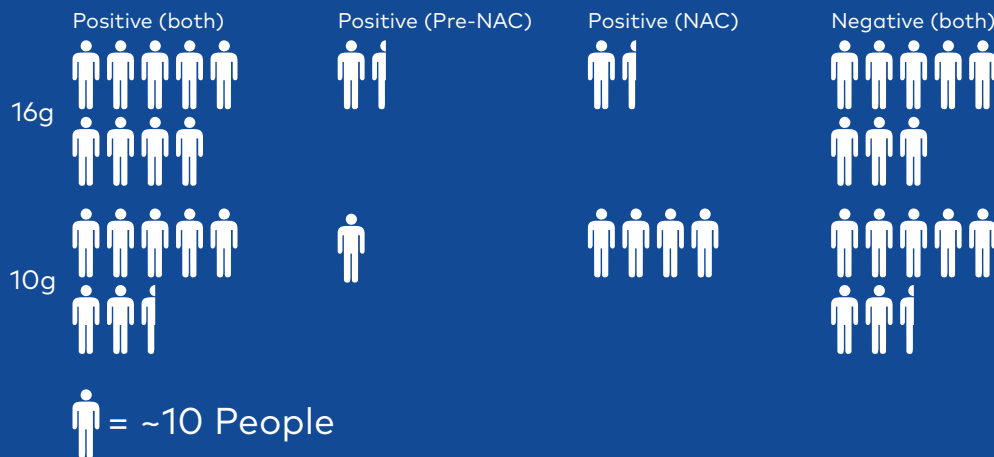
Pitcher et al. (2022) Dig. Dis. Sci. DOI: 10.1007/s10620-022-07487-8



## Lactulose

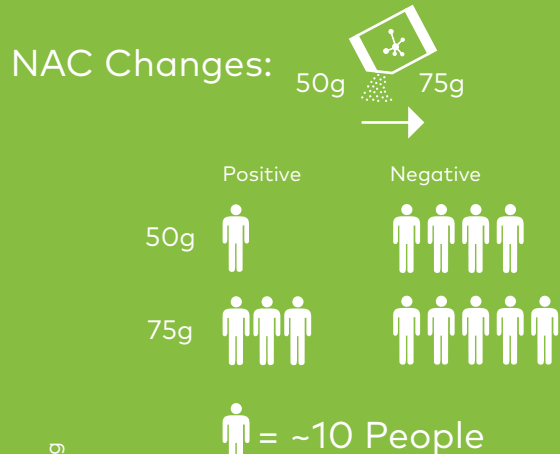


A **higher** lactulose dose was associated with more **severe** feelings of **bloating**.



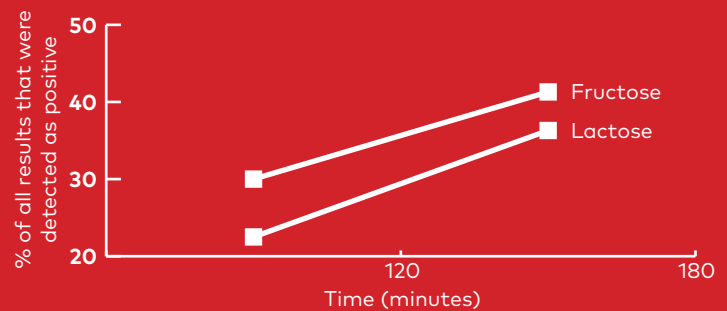
Results favour the **lower dose** as more **patient friendly** and **less likely** to produce **false positives** or lead to increased **symptom severity**.

## Glucose



Glucose is **rapidly absorbed** and prone to **false negatives** so the **increased dose** seems to **improve results** with **minimal adverse effects**.

## Lactose/Fructose



% of positive test results

