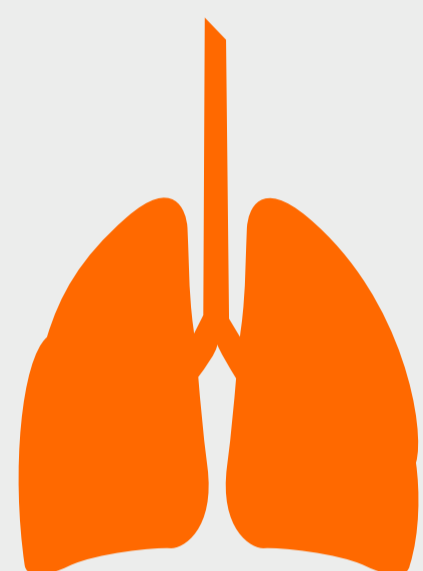
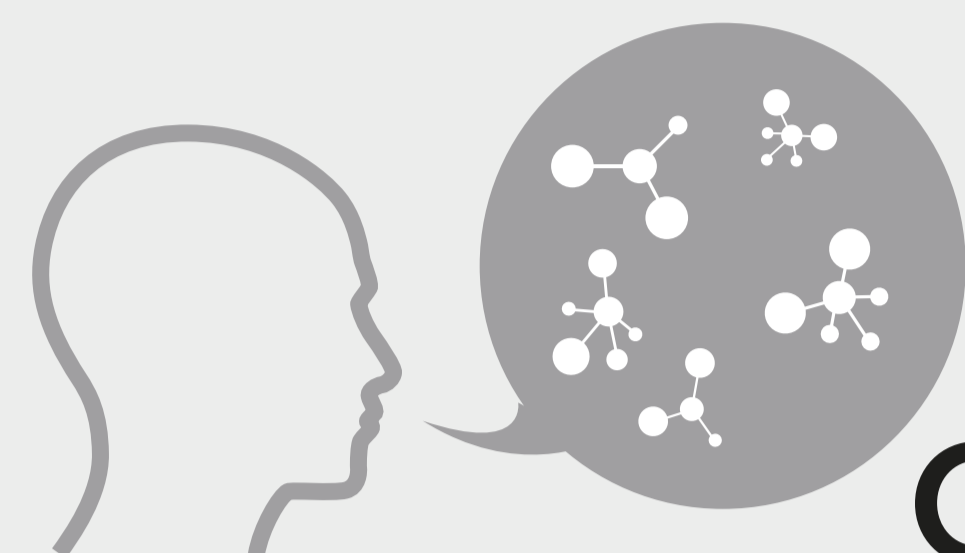


WHAT

• • • AN **RUO PANEL** OF • • •
BIOLOGICALLY RELEVANT
**VOLATILE
ORGANIC
COMPOUNDS**
THAT HAVE BEEN LINKED TO
**CHRONIC
INFLAMMATORY
AIRWAY DISEASE**



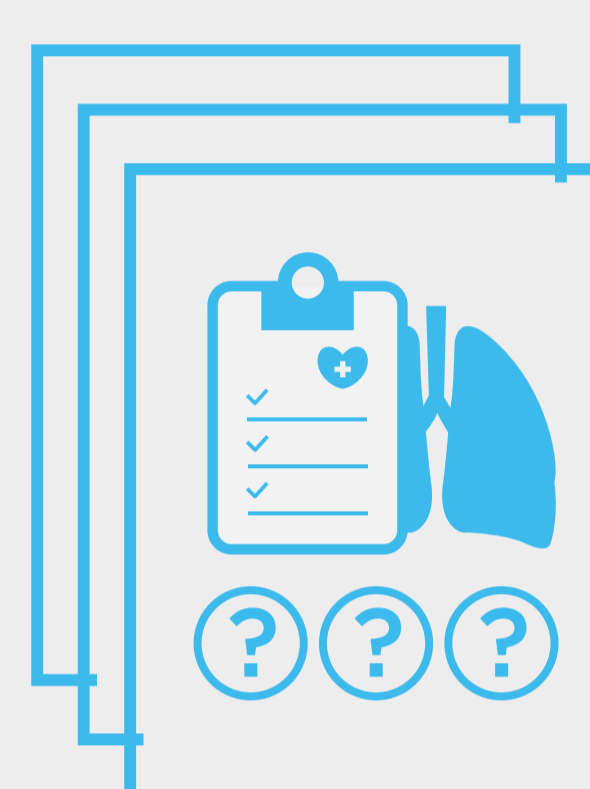
WHY

THERE IS AN **URGENT**
AND **GROWING NEED**
TO FACILITATE BETTER



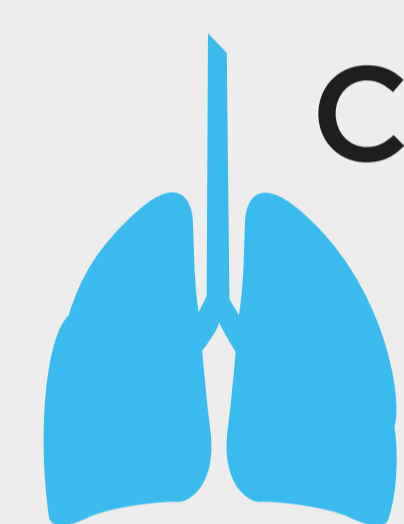
**THERAPEUTIC
DECISION MAKING AND
MONITORING**

IN **RESPIRATORY DISEASE**



THERE ARE CURRENTLY **NO**
COST-EFFECTIVE AND
PATIENT-FRIENDLY
WAYS TO CHARACTERISE
AIRWAY INFLAMMATION

WHO



**CHRONIC INFLAMMATORY
AIRWAY DISEASE**
PATIENTS WORLDWIDE



Diseases Include

ASTHMA

~ AFFECTING ~
339 MILLION

PEOPLE 

OF WHICH **ONLY 18%**
ARE **FULLY CONTROLLED**
(USING GINA CRITERIA)

IPF AFFECTING
AROUND
3 MILLION

PEOPLE  THE
MEDIAN **SURVIVAL**
AFTER DIAGNOSIS
IS **2-3 YEARS**

COPD

THE **3RD** BIGGEST CAUSE
OF **DEATH** WORLDWIDE
WITH AN ESTIMATED
251 MILLION CASES

LUNG CANCER

WITH OVER
2M NEW CASES 
& **1.76M DEATHS** 
REPORTED PER YEAR


HOW MUCH

**LUNG
DISEASE
COSTS THE**
NHS NATIONAL
HEALTH
SERVICE

**£ 11
Billion
PER YEAR**



IN THE USA,
THE TOTAL ANNUAL
ASTHMA

 COSTS ARE
ESTIMATED
TO BE **\$56
Billion**

THE **ECONOMIC
IMPACT** OF
.. COPD ..

AMONG LOWER INCOME
COUNTRIES IS EXPECTED
TO INCREASE TO
**£1.7
Trillion BY 2030**

